

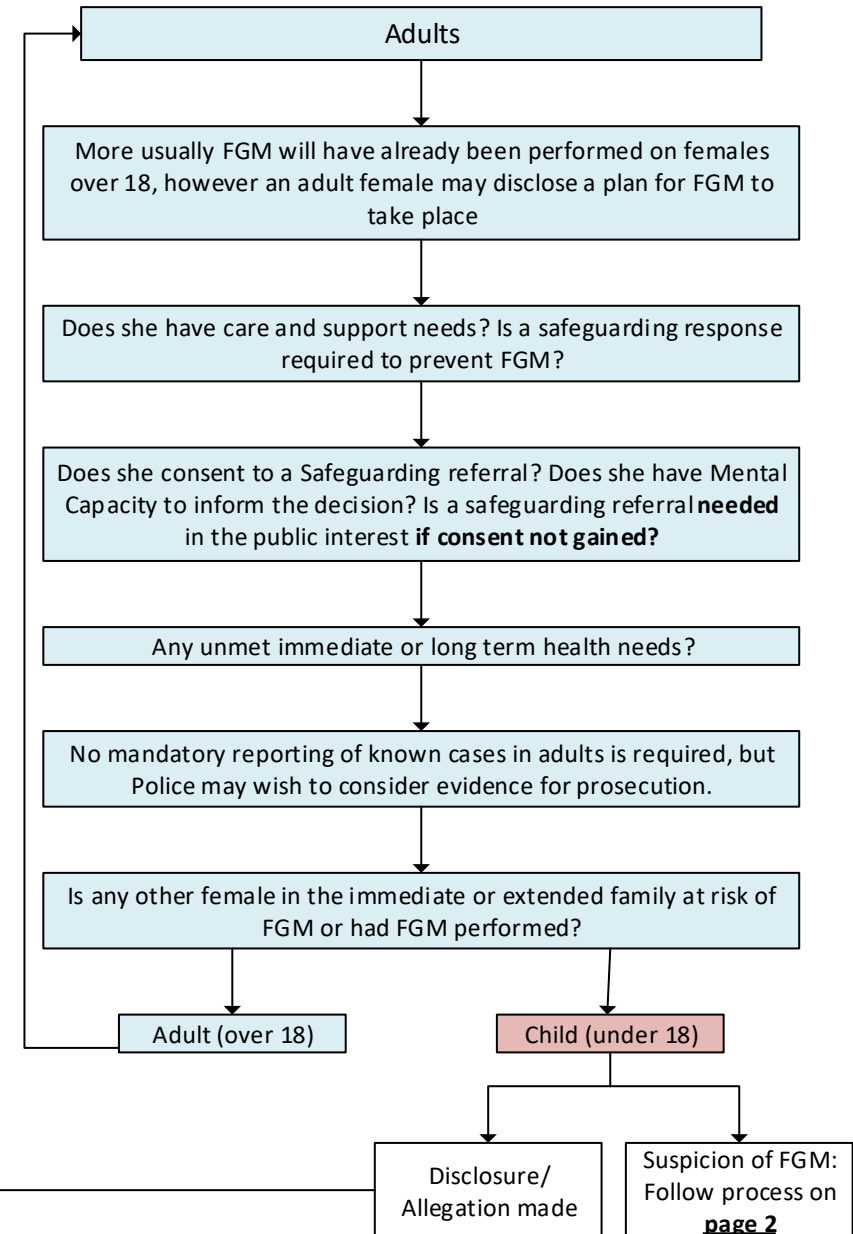
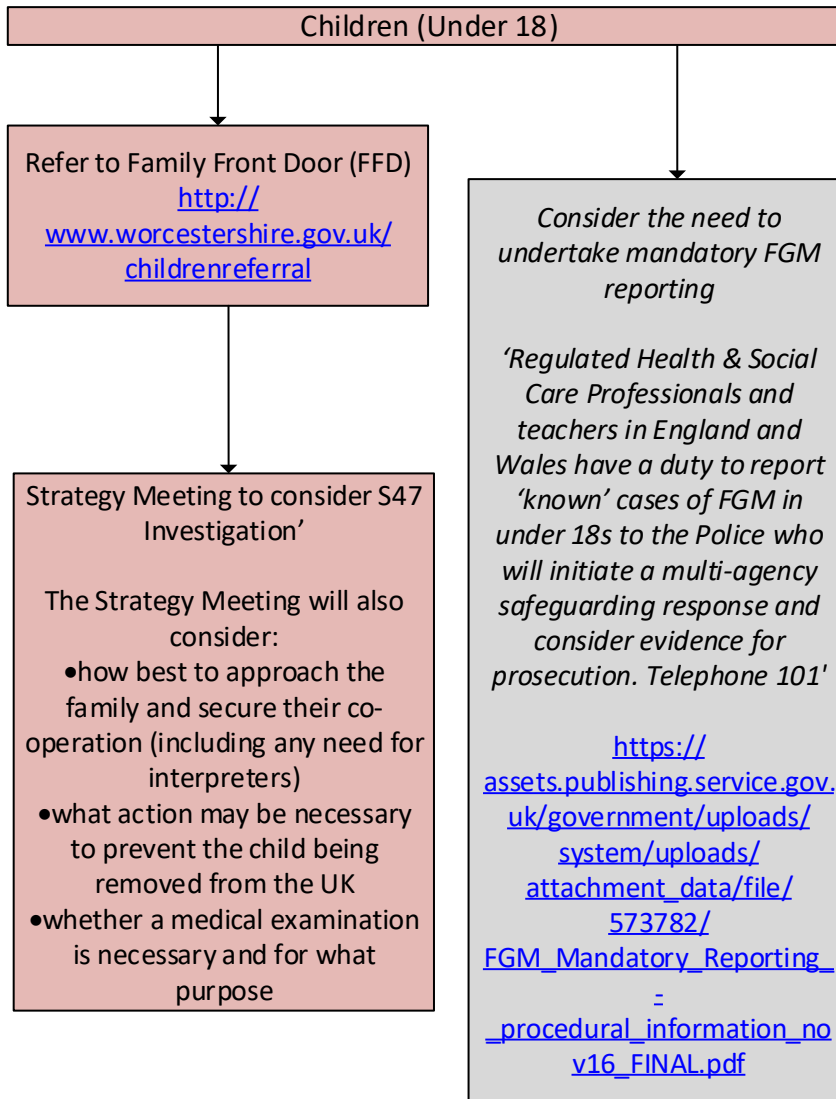
Female Genital Mutilation (FGM) Pathway

There is an allegation of suspected FGM, a disclosure made or a physical sign of FGM

Is the primary concern in relation to a child (under 18) or an adult?

If a girl appears to have recently undergone FGM or you believe she is at imminent risk, act immediately by phoning 999.

If at any point you need more information...
- Make further enquiries
- Seek advice from Community Social Workers and/or Champions.



FGM (Female Genital Mutilation) Pathway

PRESENTATION PROMPTS PRACTITIONER TO SUSPECT/CONSIDER FGM
E.g. Repeated UTI, vaginal infections, urinary incontinence, dyspareunia, dysmenorrhea, toileting difficulties, etc.
Also consider difficulty getting pregnant, presenting for travel health advice or patient disclosure (e.g. young girl from community known to practice FGM discloses she will soon undergo 'coming of age' ceremony)

