



# WSCP Newsletter

## March 2020

### COVID-19 Update from Derek Benson, Independent Chair

Dear Colleague

I wanted to take the opportunity to write to assure you that the safeguarding of children in Worcestershire remains a priority as we work through the current situation with coronavirus.

These are uniquely challenging times and the strength of the local partnership in the county will stand us all in good stead to meet those challenges.

Working practices will continue to evolve over the coming weeks to meet the needs of the most vulnerable in our communities. You will have received guidance from your own organisation but may I also assure you that the safeguarding partnership structure continues to operate.

We will have to reassess our planned activity and adopt a pragmatic approach to what is feasible when we are working remotely from each other, but our commitment to provide help and support where needed is as strong as ever.

Working together has never been more important.

Derek Benson  
Independent Chair  
Worcestershire Safeguarding Children Partnership

In light of the current situation as a result of Coronavirus, the Safeguarding Partners have sort to agree measures and plans to reduce the risk of contracting and spreading of the virus to children, young people, their families and within our multi agency workforce. Full details of these have been circulated to the various partner representatives, however from a Worcestershire Safeguarding Children Partnership (WSCP) perspective sub-group meetings will be held virtually where the business can be achieved in this way, or postponed pending an improvement in the current situation. Further, all multi agency training planned for March/April has been cancelled.

For the latest information you can go to the dedicated advice page on the Worcestershire County Council website <http://www.worcestershire.gov.uk/coronavirus>.

### Meet The WSCP Executive Group:



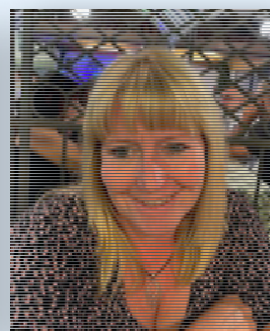
**Derek Benson**  
WSCP Independent  
Chair



**Tina Russell**  
Director of Social Care &  
Safeguarding, WCF



**Stephanie Brighton**  
West Mercia Police  
GET SAFE Chair



**Ellen Footman**  
Head of Safeguarding  
CCG's  
CSPR Chair



**Daniel Gray**  
Principle Social Worker,  
WCF  
QAPP Chair

## Worcestershire Safeguarding Children Partnership:

### Wider Partnership Meeting February 2020

On Wednesday 12th February we held the first meeting of the wider Worcestershire Safeguarding Children Partnership. Representatives from all agencies involved in safeguarding children and young people in Worcestershire were invited.

- Attendees were updated on the work of the Executive and each of the sub-groups, these being GET SAFE, the Quality Assurance Practice and Procedures Group (QAPP) and the Child Safeguarding Practice Review Group (CSPR). The meeting also heard from the Headteachers Safeguarding Steering Group which is to be included in the arrangements.
- Partners were asked six questions focused on how we can improve how we work together to keep children safe in Worcestershire. Partners worked in mixed agency groups to answer, and the feedback from will be used to prioritise our work during the coming months.
- The Executive would like to thank everyone for their help, support and attendance



## CSPR Learning Briefing—'Baby Isaac'

As many of you will be aware, Worcestershire published a Serious Case Review in July 2019—'Isaac'.

As a result of this, a learning briefing was published on the **Worcestershire Safeguarding Children Partnership website**. The Child Safeguarding Practice Review (CSPR) Group would like to ask that all practitioners check they have read this learning briefing, and that managers have shared it with their teams (link below).

The review found that not all professionals were fully exploring initial concerns around alcohol consumption of parents.

Over time, parental minimisation of alcohol use was accepted by professionals and a serious incident was perceived as an isolated occurrence. Therefore the impact of parental alcohol misuse on the capacity to parent was not recognised and the impact on the lived experience of the children was unknown.

Given the prevalence and acceptance of alcohol use in society, it is possible that practitioners may normalise periodic excessive drinking and fail to recognise the serious consequences that non-dependent drinking can have on parenting capacity.

### What needs to happen:

Practitioners should always ask parents about their alcohol consumption if relevant. An alcohol assessment tool (Audit Tool C) is available at: <https://www.gov.uk/government/publications/alcohol-use-screening-tests>

To access the full learning briefing please follow this link:

<https://www.safeguardingworcestershire.org.uk/wp-content/uploads/2019/07/>

