



WSCP Newsletter

September 2020

Update on Cases in Worcestershire Children First

A focused piece of work is currently taking place in Worcestershire Children First to ensure work-flow is moving through the system again.

During the 8 weeks of lockdown, Child Protection Plans were not stepped down and Child In Need Plans were not closed due to direct work with families not taking place.

Worcestershire Children First would like to reassure agencies that they are only closing these targeted cases in a short period of time due to them being 'on hold' during the COVID-19 lockdown now direct work can be resumed

Local Authority Designated Officer—

A guide for professionals & volunteers

Worcestershire Children First have produced an information guide on the Local Authority Designated Officer (LADO) for professionals and volunteers who work with children.

The guide includes the following—

- ◆ What is LADO?
- ◆ When and how should you contact the LADO?
- ◆ What happens after contacting LADO?
- ◆ Information regarding the Family Front Door
- ◆ What happens at the end of the investigation?
 - ◆ Escalation procedures

The guide has been shared on to the Worcestershire Safeguarding website and we advise that agencies share this out to their frontline staff.

Full article below:

<https://www.safeguardingworcestershire.org.uk/wp-content/uploads/2020/07/LADO-A-guide-for-professionals-volunteers-who-work-with-children-1.pdf>

Procedure Update: Abuse Linked to Faith, Cultural and Religious Beliefs

The 'Abuse Linked to Faith, Cultural and Religious Beliefs' Procedure has recently been updated.

This now includes information on Breast Ironing added as point 2.7.1.

The full Procedure can be found by following the link—<https://westmidlands.procedures.org.uk/pkphz/regional-safeguarding-guidance/abuse-linked-to-faith-or-belief/#s634>.

Multi Agency Levels of Need and Threshold Guidance Workshop

The **Multi Agency Levels of Need and Threshold Guidance Workshop (Webcast)** is now taking bookings.

Date: 7th October 2020 (This session is currently not for WCF Social Work Staff)

Time: 10am till 12pm or 2pm till 4pm

(More dates will be advertised soon)

The workshop is for all agencies and professionals who need to have an understanding of the levels of need in Worcestershire. It will cover –

- How to apply the Levels of Need
- Review the Threshold document
- Cover the Legal and Policies Frameworks
- Information sharing of which services are available to families at which levels

To book onto this webcast please follow the link and instructions below:

[External Agencies - Multi Agency Levels of Need and Threshold Guidance Workshop](#)

Do you have an account – No thanks

Course price - click in public circle

Select organisation from dropdown box – Public

Put in your address

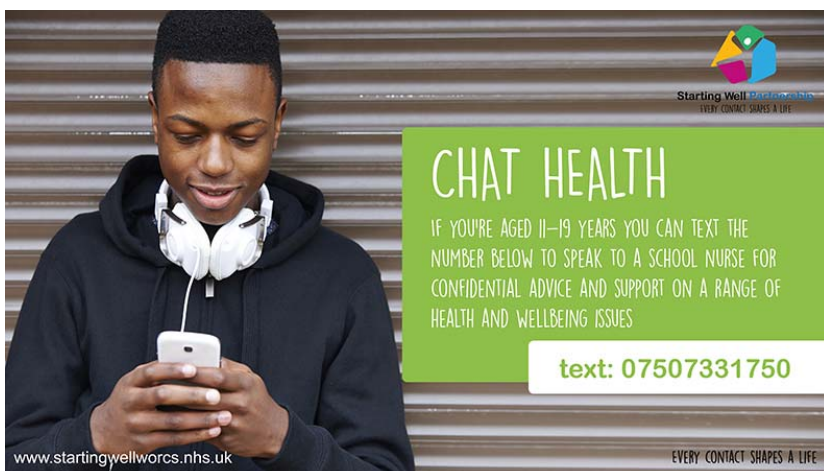
Then click book course



If you have any issues with booking please contact Judith Peachey: JPeachey@worcestershire.gov.uk

Chat Health

Chat Health is a text service run by Starting Well Worcestershire to support young people with their emotional health and wellbeing. This is a very useful resource, especially during a time of COVID-19 where there may well be restricted direct contact with families, and as such you may wish to raise the awareness of it within your own agency



Chat Health flyer.jpg