

# Worcestershire Safeguarding Adults Board Bitesize Webinar



Bridget Brickley  
Board Manager

[Bbrickley@worcestershire.gov.uk](mailto:Bbrickley@worcestershire.gov.uk)

01905 846572

<http://www.worcestershire.gov.uk/wsab>

# Virtual Training Protocol

- Mute microphones when not speaking
- Raise hand to speak or indicate in comment box
- Be Kind respect others views and perspectives
- Opportunity to reflect and learn
- Support Available if required (speak to us after – confidential)

# Bitesize webinars

1. What is safeguarding and how to report it in Worcestershire
2. **Role of the Safeguarding Adults Board**
3. Mental Capacity Act and Best Interest Decisions
4. Making Safeguarding Personal
5. Safeguarding Adults Reviews
6. Engagement

# Care Act (2014)

## Safeguarding Criteria



To protect adults who

- *have **needs for care and support** (whether or not the local authority is meeting any of those needs) are experiencing, or at risk of, abuse or neglect; and*
- *as a result of those care and support needs are **unable to protect themselves from either the risk of, or the experience of abuse or neglect.***

# Six Safeguarding Principles

Empowerment – support for individuals to make their own decisions

Prevention- Taking action before harm occurs or risk escalates

Proportionality – the least intrusive/restrictive intervention required to the risks presented

Partnership – working across agencies, services & communities to prevent, detect & report neglect & abuse.

Accountability- Enabling SU's & leaders to challenge agencies for their responses to those at risk of harm

Protection- Supporting those in need as a result of abuse or neglect



# Role of the WSAB

What we do  
(and don't do)

## Independent Body

### Seek assurance

that organisations who deliver services or commission services for adults with care and support needs address safeguarding appropriately

### Measure Performance

**HOLD STRATEGIC PARTNERS TO ACCOUNT**

# Statutory Requirements Care act (2014)



## Statutory Partners

- Local Authority,
- National Health Service (Hospital, CCG, and Community and Mental Health Trust)
- Police

## 3 core duties:

- Publish strategic plan (annual business plan)
- Publish annual report (How we have done that year)
- Undertake Safeguarding Adults Reviews (SARs)

# Membership

- Statutory Partners are LA, CCGs & Police
- Non prescriptive guidance on other members – board has authority to decide Board must assure itself that all necessary partners are involved to effectively carry out its duties
- Board members must be sufficiently senior to have authority to commit resources and make strategic decisions



# Worcestershire Members

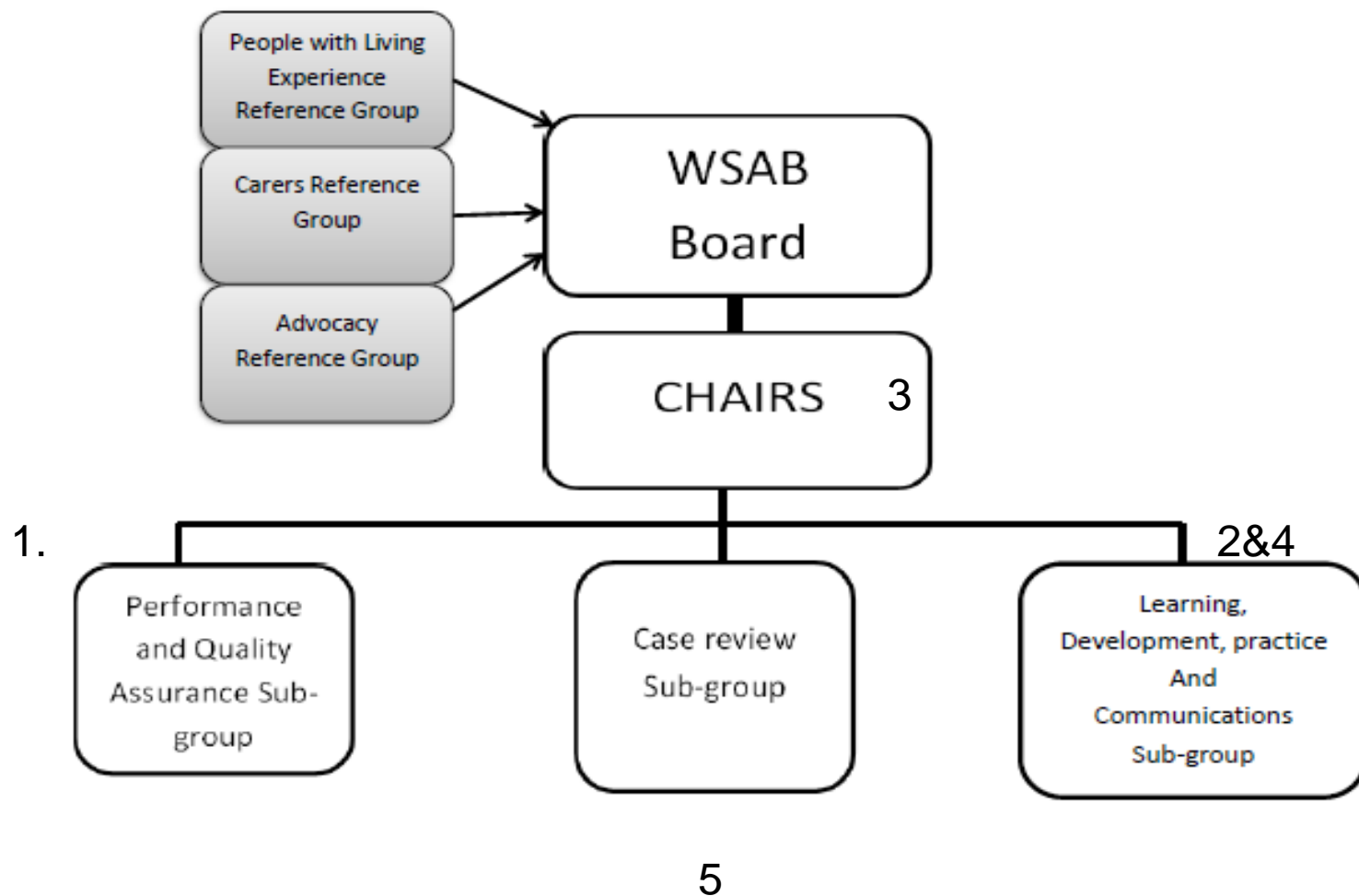


- Worcestershire County Council
- West Mercia Police
- Herefordshire and Worcestershire NHS CCG
- Herefordshire and Worcestershire Health & Care NHS Trust
- Worcestershire Acute Hospitals NHS Trust
- Public Health
- National Probation Service
- Worcestershire Voices
- Regulatory Services (Trading Standards)
- Care Homes Association
- County Housing Strategy Group
- Carers Reference Group
- Advocacy Reference Group
- People with experience representative (PWLE)
- Lead Councillor for adult social care

# What the Board does:

- 1. Monitor safeguarding performance of Strategic Partners and identify emerging concerns/issues;**
- 2. Ensure effective training and prevention is in place for staff who deliver services;**
- 3. Ensure policies and procedures are in place to report and prevent abuse;**
- 4. Raise awareness of safeguarding concerns.**

# WSAB Structure



# 5 Safeguarding Adults Reviews

A SAR can take place when:

- An adult dies or there is a serious incident as a result of abuse or neglect, whether known or suspected, and there is a concern that **partner agencies** would have worked more effectively to protect the adult

The focus is on:

- Seeking assurance that there are processes in place to ensure it doesn't happen again
- Identifying the learning from this

# WSAB Annual Objectives 2021/22



## **Making the System Work**

Continue to oversee the delivery of safeguarding requirements (S42, MSP and LPS), ensuring that learning is embedded across all services and that the pathways are understood.

## **JOINT WORKING**

Build on joint working with other Worcestershire Partnerships to ensure that adult safeguarding issues receive the appropriate strategic ownership and provision across all services;

## **WICKED ISSUES**

Develop the WSAB ability to understand the 'wicked issues' which have the potential to have an impact on safeguarding adults with care and support needs

# What we are doing to deliver these objectives

## Wicked Issues

- Exploitation -
- Rough Sleepers
- Lead Practitioner/Section 42 referrals (CARM framework)

## Review of SAR process

- Person and family & professional engagement
- Development of Learning Briefs

## Improve Communication

- Review of Website
- Develop our approaches to sharing information
- Campaigns (Safeguarding Week/Key themes)
  - Best interest decisions/transition
  - Self Neglect

## Assurance Work (following SAR recommendations)