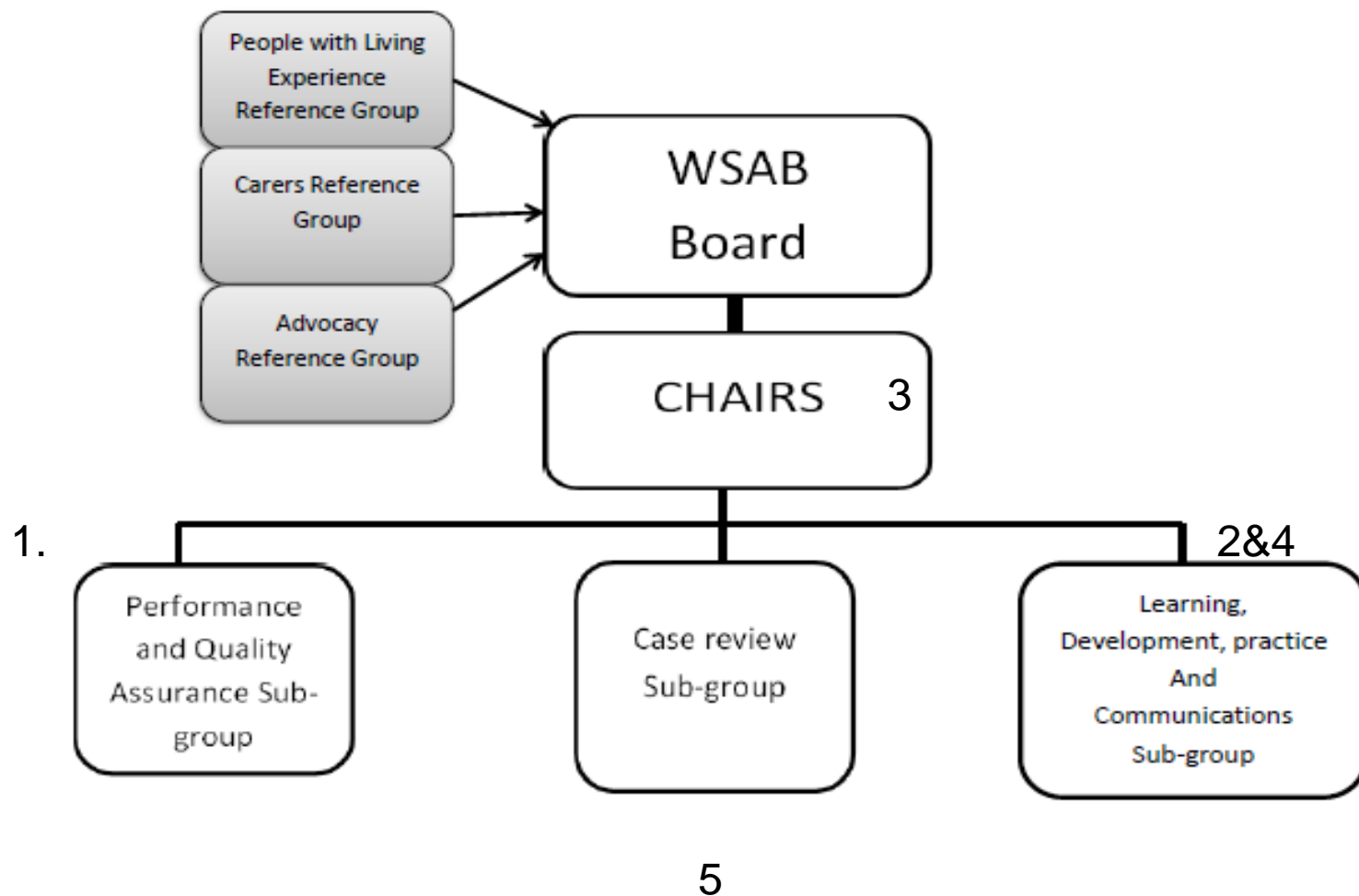


WSAB Structure



What the Board does:

- 1. Monitor safeguarding performance of Strategic Partners and identify emerging concerns/issues;**
- 2. Ensure effective training and prevention is in place for staff who deliver services;**
- 3. Ensure policies and procedures are in place to report and prevent abuse;**
- 4. Raise awareness of safeguarding concerns.**

Working with us:

Assurance Work (following SAR recommendations) and Policy/Processes

- Herbert Protocol
- Rough Sleepers Thematic Review Recommendations
- Complex Adult Risk Management (CARM) Framework
- SAR Process review

Communication and Learning

- Advise on campaigns and design
- Website
- Leaflets
- Webinar /training content
- Safeguarding Week (15th November)

Identify Issues to feed into the Board

- **Board Representative?**
- Presentations
- Managers report (feed in issues raised at reference group)