



Worcestershire Safeguarding Adults Board
Easy Read Annual Report
2021 - 2022



Message from our Chair

Professor Keith Brown, who is the Independent Chair of Worcestershire Safeguarding Adults Board says:



I am delighted with all of the hard work that the board and board members have achieved in my first year as Chair of Worcestershire Safeguarding Board.

Covid-19 is still affecting the health and social care sector and I would like to thank health and social care staff who are coping with high workloads.

This year, we have developed the Safeguarding Adult Rapid Review process, this makes sure what we learn from reviews is reported to the public quickly.

We have carried out new work in self-neglect.

Next year, we want to review our systems to see where we can improve, to work better with partners and to be as open as possible in how we work. This will improve safeguarding in Worcestershire.

This report shows how health and social care agencies, in the Worcestershire Partnership, have worked to provide better outcomes for vulnerable people in our community during the last year.

What does the Worcestershire Safeguarding Adults Board do?



The Worcestershire Safeguarding Adults Board:

- Keeps people safe from abuse or neglect
- Makes sure that agencies all work together so that people are kept safe and supported to make their own decisions
- If abuse or neglect does occur, the Worcestershire Safeguarding Adult Board will make sure it is looked into

Who is part of the Safeguarding Board?



The Board is made up of people from many agencies:

Worcestershire County Council

West Mercia Police

NHS Herefordshire & Worcestershire Clinical Commissioning Group

Hereford & Worcestershire Health and Care NHS Trust

Worcestershire Acute Hospitals NHS Trust

National Probation Service

Regulatory Services



Who is part of the Safeguarding Board?



Agencies continued:

Worcestershire Voices

Representative from Worcestershire Housing Strategic Partnership

Representative from Care Homes

Representative from Carer Reference Group

Representative from Advocacy Reference Group

Representative from People with Lived Experience (PwLE)

Lead Councillor for Adult Social Care

Public Health

Representative from Independent Health Providers

The Safeguarding Board's Annual Budget



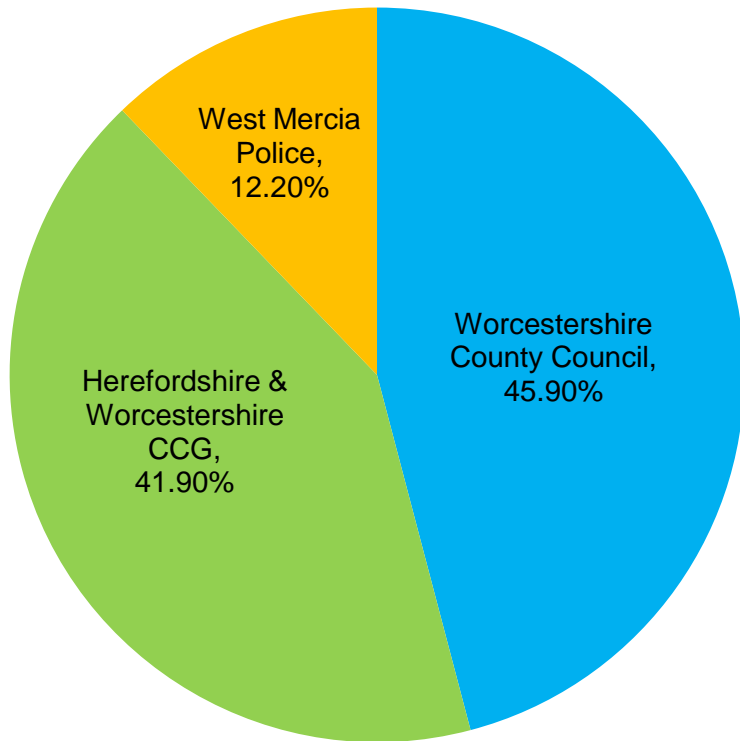
- The Annual budget for the year 2021 – 2022 was £125,524
- This is the money that the Board can use to support the service
- The total spent for the year was £132,561. The overspend was predicted and covered by money from previous years.

How was the money spent?



Staff and Administration Costs	£109,224
Special Projects	
• Exploitation Coordinator (temporary)	
• Apprentice (temporary)	£14,061
Safeguarding Adult Reviews	£9,026
Learning Development Practice and Communications	£250
Total Spend	£132, 561

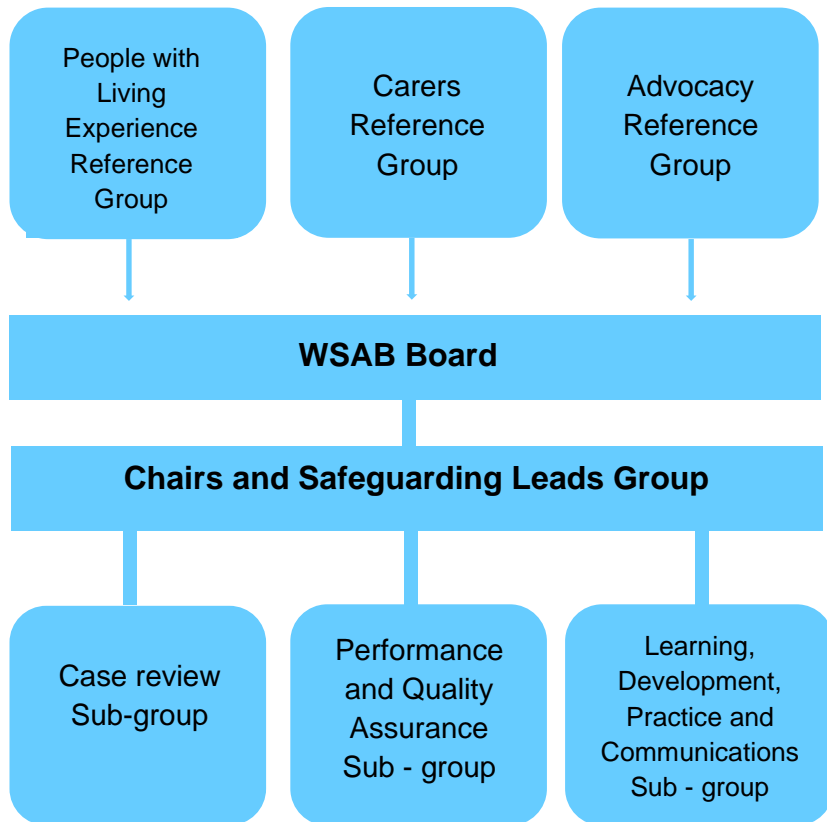
How is the Safeguarding Board funded?



The Annual Budget is made up from money given by these three partners:

- Worcestershire County Council - 45.9 %
- Herefordshire & Worcestershire Clinical Commissioning Group - 41.9 %
- West Mercia Police - 12.20 %

How does the Worcestershire Safeguarding Board Work?



- There are 3 reference groups that find and raise safeguarding issues to the Safeguarding Board. They act for people with support and care needs, their carers and families
- There are 3 subgroups that work with the Worcester Safeguarding Adult Board. They work together to make plans so the Safeguarding Board can do their job
- The plans are looked at throughout the year

About the Care Act

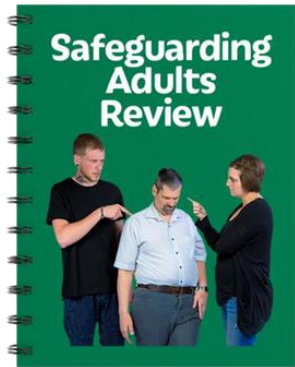


The Care Act 2014 put a duty into place to do Safeguarding Adults Reviews (SARs) when the following things happen:

- When there is a worry about how members of the Worcestershire Safeguarding Adults Board (WSAB) or other providers worked together to make sure an adult is safe
- And the person dies and it could have been because of abuse or neglect
- Or the person is alive but they have suffered abuse or neglect

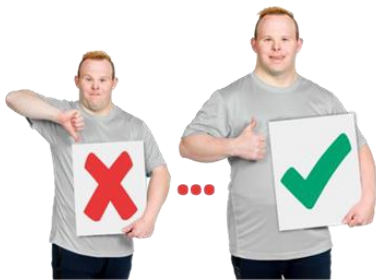


Why we have Adult Safeguarding Reviews

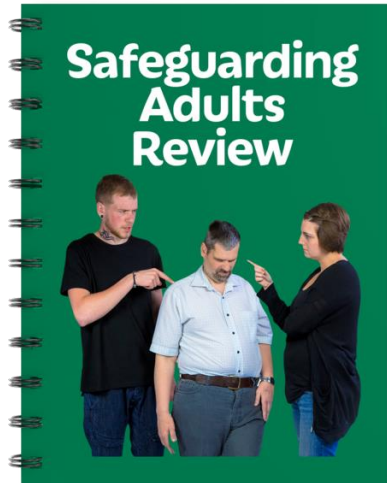


A Safeguarding Adult Review (SAR) is set up to:

- Find out what other people could have done differently to have stopped a death or harm to someone happening
- A Safeguarding Adult Review will involve people from a number of different agencies working together
- A Safeguarding Adult Review is to make sure that we learn and make things better to stop deaths or harm happening in the future
- A Safeguarding Adult Report will help improve care and support



Rapid Review



- This year the Worcestershire Safeguarding Adults Board introduced a rapid review process.
- This process involves all agencies who worked with the person at an early stage. This has meant that we can get the learning out from the review as quickly as possible.
- There has also been a cost saving of 50% when compared to the current Safeguarding Adult review process.



Referrals in 2021 - 2022



In 2021 - 2022 there were:

- 6 cases that were sent to be looked at for a Safeguarding Adult Review.
- 3 of these cases did meet the level to get a review. The rapid review process is being used for these cases.
- 2 cases did not meet the level, 1 of these had single agency actions.
- 1 case did not need to be looked at.



Completed Reviews in 2021 - 2022



In 2021 - 2022 there were:

- 2 reviews done during the year, these were cases from previous years but completed and signed off by the board in March 2022.
- One of the reviews completed this year led to new learning that has been published: <https://www.safeguardingworcestershire.org.uk/wp-content/uploads/2022/07/Learning-Briefing-BS-V3-For-Publication-July-2022.pdf>
- The second completed review was about care provided in a care home setting, the findings have been shared with commissioners and will be shared more widely when published.
- One review is still waiting to be signed off by the government, there is a backlog due to Covid-19.

What we set out to do

The 2 Safeguarding Adult Reviews that we did in 2021 - 2022 will help us to do things better, this is what we will improve:



- Making safeguarding personal (MSP) by using advocacy where needed and helping people who refuse support.
- Making sure our partners and agencies work well together and talk to each other.
- If something does go wrong, there should be a clear process to follow.
- One person should lead the care or treatment. For example a named social worker.
- We will consider whether a person is finding it hard to make their own decisions. The self-neglect and hoarding policy was reviewed in May 2022 to help with this.
- We will make sure all safeguarding training includes abuse that may happen in the home between older couples.

About Section 42 Enquiries



Section 42 of the Care Act 2014 means that the Local Authority has to make enquiries into safeguarding concerns.

There are three things to think about when deciding if a concern meets the rules for a Section 42 enquiry, these are:

- The person has care and support needs
- The person is experiencing abuse or is at risk of abuse
- As a result of care and support needs, the person is unable to protect themselves

Concerns dealt with under Safeguarding



Concerns dealt with under safeguarding 20189 - 2022			
	Year 2019 - 2020	Year 2020 - 2021	Year 2021 - 2022
Concerns reported	3921	3283	4007
Meets Section 42 rules	542	902	793
Percentage that meet section 42 rules	14%	27%	19%

Going Forward 2022 - 2023

This year we held a strategy day to look at what we did last year and to make plans for next year:

These are our plans for 2022 – 2023



- Make sure we have a good communication plan
- Continue to understand the issues that affect safeguarding adults with care and support needs.
- Make sure the Complex Adults Risk Management framework and the Self neglect and Hoarding policy are put in place.
- Work in partnership with Herefordshire care system.
- Make sure we safeguard adults in the services they use
- Make sure we understand the problems of recruiting staff in the care and social sector.