

Board Business

The Board met in early December. Staffing pressures in Health and Social Care and the safeguarding risks this presents continues to be a substantive discussion item. Mark Fitton, the Director of People at Worcestershire County Council, gave a report on the various ways they are endeavoring to encourage people to work for the Health and Care sector. This includes work in schools and targeted work with the care sector. Alongside recruitment other risks around staffing pressures discussed included the onset of industrial action.

There was a presentation on how the County Council is responding to increases in Adult Safeguarding concerns being raised. Additional resources have been allocated to support this work.

The WSAB received a presentation from the Hereford and Worcestershire Health and Care Trust on the recent issues which were reported on the Hill Crest Ward at REDDITCH Hospital. Since the report there has been an assessment on the staffing structure and pathway to care. Additional funding has subsequently been allocated and there have been changes in staff.

The regular feedback from the Sub-groups included an update on the work looking at Adult Exploitation and implementation of the Complex Adults Risk Management framework. There had been some delay in moving these forward as quickly as hoped, due to the national issues around recruitment, however project leads are now in place for both initiatives and the expectation is that the objectives for these will be met by the end of the business year.

Policy Watch

Focus on the Complex Adult Risk Management (CARM) Framework

The CARM framework was launched in May 2022. It provides front line practitioners with a framework to facilitate effective working with adults who are at risk of harm due to complex needs and services struggle to engage with, but don't meet Care Act criteria.

A copy of the framework can be found by following this link [CARM Framework](#).

This page also includes a link to the referral form which can be found here [CARM referral form](#)

Referrals should be made via the following email address:

CARM@worcestershire.gov.uk

We have also produced a short leaflet outlining the process which can be found here [CARM Leaflet](#) as well as an easy read version which can be found here: [CARM Leaflet \(Accessible Version\)](#)

Finally, following the oversubscribed CARM briefings held by the project lead during safeguarding week. Sue Lawrence is holding further sessions in the new year. Dates and registration can be found by following this link [CARM Briefing Registration](#)

Spotlight on WSAB work

WSAB Network Group -Next meeting 28th March 2023

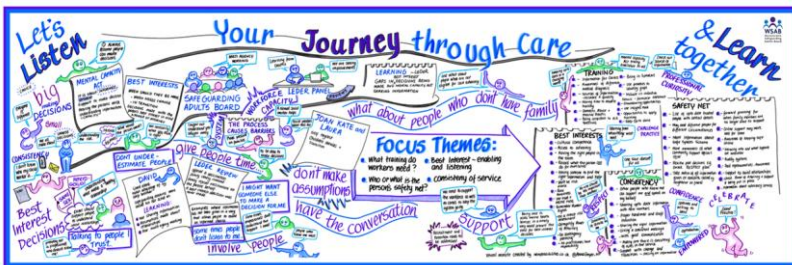
Our Safeguarding Network group is open to organisations who directly deliver services to adults at risk, including voluntary sector and services that operate at a district level. At our next meeting we have presentation from

Further details on this network and how to join can be found by following this link: [Safeguarding Network Group - Worcestershire Safeguarding Boards](#)

WSAB Annual Learning Event

Your Journey through Care – Listen and Learn Together

Each year the WSAB holds an annual learning event to share learning on the Safeguarding Adults Reviews we have undertaken. This year we held a joint event with the Learning from Lives and Deaths of People with a Learning Disability and autistic people (LeDeR) programme. We brought together people who have a learning disability with practitioners and commissioners. At this event participants shared their experience and together we explored opportunities to bring about improvements which can remove or reduce future risks.



The event was recorded graphically, and the findings will be shared with the WSAB and the LeDeR to inform future work plans.



Useful Links and Resources

Impact of the cost of Living

This will be a difficult winter for many with significant increases in the cost of living. The Warm Welcome website provides a digital platform to locate local warm hubs by typing in your address or post code which can be found by following this [Link to Warm Welcome website](#)

As cost sore vulnerable adults often become targets for scams. The WSAB has webpage with further information on Scams [WSAB webpage Scams](#). There is also a national site which provides help and support which can be found by following this link [Home - Stop Loan Sharks](#)

New WSAB Resources and Publications update

Over the last quarter the WSAB have produced the following information which can be found on their website by following these links:

[WSAB Self-Neglect and CARM reflective training](#)

[WSAB Annual Report 2021 to 22 Easy Read version](#)

[Demystifying Safeguarding and Quality Concerns Leaflet](#)

[Demystifying Safeguarding and Quality Concerns Leaflet \(accessible version\)](#)

[Link to WSAB Fraud and Scam Podcast](#)