



North Worcestershire
Community Safety Partnership

COMMUNITY SAFETY PARTNERSHIPS

Bev Houghton

Community Safety Manager

Bromsgrove District & Redditch Borough Council

Responsible Authorities



- **West Mercia Police**
- **Bromsgrove District Council**
- **Redditch Borough Council**
- **Wyre Forest District Council**
- **Worcestershire County Council**
- **Herefordshire and Worcestershire Fire and Rescue Service**
- **The Probation Service**
- **Redditch & Bromsgrove and Wyre Forest – Integrated Care Board (replaced Clinical Commissioning Groups)**



Statutory Duties

Under the Crime & Disorder Act 1998 and all subsequent amendments, each Responsible Authority, has a duty to:-

Exercise its individual functions with due regard to the likely effect of those functions on crime, disorder, ASB and re-offending...and do all that it reasonably can to prevent crime, disorder ASB and re-offending in its area

Form part of a **Strategic Group** alongside representation from each of the other responsible authorities (the Community Safety Partnership)

As a partnership, the Responsible Authorities working together have a duty to:-

Formulate and implement a three year, rolling **Community Safety Partnership plan** for the area

Produce an annual **Strategic Assessment**

Share information through an agreed information sharing protocol to assist in the reduction of crime, ASB and re-offending (Section 115 Crime and Disorder Act 1998)



Statutory Duties

In two-tier areas, Responsible Authorities are required to have membership on a **county-wide CSP** group that has a clear **escalation process** of issues from districts to the county

In April 2010, as part of Responsible Authorities **statutory duty to reduce re-offending**, CSPs received additional responsibilities for delivery of Integrated Offender Management

In April 2011, the Government placed a requirement on CSP's to conduct **Domestic Homicide Reviews (DHR)** in the situation where the death of a person occurs, or is thought to occur as a result of violence, abuse or neglect by a family member or a member of the same household

In Nov 2012, Police and Crime Commissioners were established and a **duty to collaborate** on development and implementation of the Police and Crime plan was placed on the **PCC** and **CSPs** within their force area

Under the **Anti-Social Behaviour, Crime and Policing Act 2014** CSPs were asked to administer the Community Trigger, one of many new tools and powers introduced to reduce Anti-Social Behaviour and put victims at the centre of interventions

Statutory Duties



In April 2021 **the Domestic Abuse Act** received Royal Assent and statutory guidance was issued in July 2022. Section 84(4) of the 2021 Act requires persons exercising public functions, to whom the guidance relates, to have regard to the Domestic Abuse statutory guidance in the exercise of those functions. Some organisations e.g., Housing Authorities may also have specific statutory duties to safeguard victims of domestic abuse. This statutory guidance sets standards and promotes best practice for those **responsible authorities with statutory duties to support and assist victims of Domestic Abuse.**

In line with the guidance, an upper tier Domestic Abuse Partnership Board has been established for Worcestershire and a **Domestic Abuse Strategy** has been developed which focuses on the key strategic responses to Domestic Abuse around **Prevention, Provision of Services, Partnership Working** and **Pursuing Perpetrators through Criminal Justice.**

The Strategy was informed by best practice and specifically outlines relevant housing authorities' duty under **Part IV of the 2021 Domestic Abuse Act in relation to provision of safe accommodation.** This aims to bring all Domestic Abuse support activity together into one place and help the Partnership Board to understand what is working well in Worcestershire and where there are areas for development.



Statutory Duties

On the 28th June, the Government introduced several law changes as part of the **Police, Crime, Sentencing and Courts Act 2022**. The PCSC Act 2022 focuses on; an overhaul of sentencing laws to make streets safer, serious violent and sexual offenders spending longer behind bars, measures to help cut crime and better protect the public and equipping police with the powers and tools they need to combat crime.

A new duty has been placed on specified authorities to address Serious Violence and statutory guidance has been produced which aims to support those authorities and PCCs in the exercise of their functions in relation to the **Serious Violence Duty**; as set out in the PCSC Act 2022.

This change in law amended the Crime and Disorder Act 1998 to include a requirement for Community Safety Partnerships (CSPs) to formulate and implement a strategy to prevent and reduce serious violence. Worcestershire CSPs are currently working together to establish how best to exercise this duty in a consistent and collaborative manner across the partnership areas of operation.



Statutory Duties

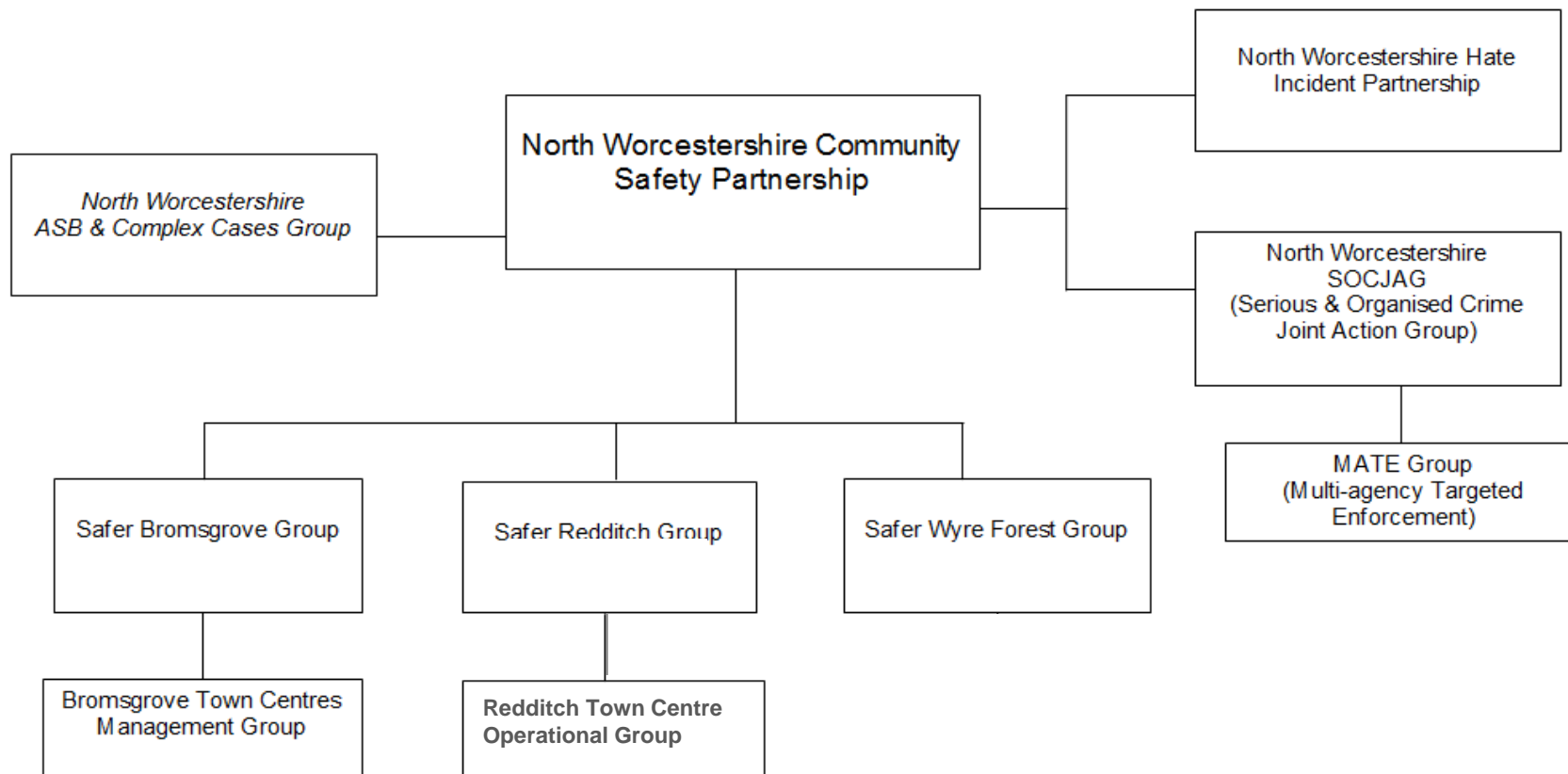
Combating Drugs Partnerships have been established in local areas as part of the next phase of the Government's 10-year strategy to **reduce supply and demand for illegal drugs**.

[Guidance for local delivery partners - Combating Drugs Partnerships](#) - provides the framework for how partners in each locality in England should work together to reduce drug-related harm in their area, with each Combating Drugs Partnership appointing a single Senior Responsible Owner (SRO) to act as chair and take responsibility for reporting back to central government.

West Mercia Partners have agreed that the PCC will be the Senior Responsible Officer for a new Combating Drugs Partnerships which will be aligned to Integrated Care Board boundaries: [Integrated Care Board - Herefordshire and Worcestershire Integrated Care System](#) and representatives of the local delivery partners for Worcestershire have been identified. The PCC has also announced £100,000 of additional funding to support the work of the Partnerships and further information about the Combating Drugs Partnership will be shared as the delivery structure and local strategies develop.



Structure





Community Safety

Definition of Community Safety -

“Community Safety is an aspect of quality of life in which people, individually and collectively, are protected as far as possible from hazards or threats that result from the criminal or anti-social behaviour of others and are equipped or helped to cope with those, they do experience” - Home Office



Principles

- Crime is preventable
- Crime is (relatively) patterned and (relatively) predictable
- Offenders are (relatively) rational and respond to situational crime prevention
- The costs of crime to society are significant
- Early intervention is crucial in diverting individuals from an offending lifestyle
- The agencies best placed to prevent crime may not be aware of their potential impact on crime



The Crime Triangle



Is derived from Routine Activity Theory and seeks to explain how and why crime occurs. The theory argues that for a crime to occur, three things need to happen at the same time and in the same space: a suitable victim/target is available, and a motivated offender is present, and both are in a specific location.



The Principles of Crime Prevention are based on securing each side of the crime triangle:-

A capable guardian - usually people protecting themselves, their own belongings or those of family members, friends, and co-workers. Guardians also include the members of the public, police and private security. **Helps victims reduce the probability of being targeted**

A handler - someone who knows the offender well and who is in a position to exert some control over his or her actions. Handlers include parents, siblings, teachers, friends and spouses. Probation officers, support workers, key workers often augment or substitute for normal handlers. **Helps prevent offenders from reoffending by making better use of handlers**

A manager - an owner or designee who has some responsibility for controlling behaviour in the specific location such as a bus driver or teacher in a school, bar owners in drinking establishments, landlords in rental housing, or flight attendants on commercial airlines. **Helps to change the environment or design of places where problems occur**



A Problem-Solving Approach





Repeat offending problems involve offenders attacking different targets at different places. These are ravenous *WOLF* problems i.e. persistent shoplifters, prolific burglars, armed robbers.

Wolf problems occur when offenders are able to locate temporarily vulnerable targets and places. The controllers for these targets and places may act to prevent future attacks, but the offenders move on to other targets and places. It is the lack of control by handlers that facilitates wolf problems.



Repeat victimisation problems involve victims repeatedly attacked by different offenders. These are sitting *DUCK* problems. For instance, taxi drivers repeatedly robbed in different locations by different people is an example of a pure duck problem.

Duck problems occur when victims continually interact with potential offenders at different places, but the victims do not increase their precautionary measures and their guardians are either absent or ineffective.



Repeat location problems involve different offenders and different targets interacting at the same place. These are *DEN* of iniquity problems. A drinking establishment that has many fights, but always among different people, is an example of a pure den problem.

Den problems occur when new potential offenders and new potential targets encounter each other in a place where management is ineffective. The setting continues to facilitate the problem events.



Crime Prevention Responses

- ***Increase the Effort of Crime:***

Harden targets, Control access to facilities, Screen Exits, Deflect Offenders, Control Tools & Weapons

- ***Increase the Risks of Crime:***

Extend guardianship, Assist natural surveillance, Reduce anonymity, Use place managers, Strengthen formal surveillance

- ***Reduce Rewards:***

Conceal targets, Remove target, Identify property, Disrupt market, Deny benefits

- ***Reduce Provocations:***

Reduce frustration and stress, Avoid disputes, Neutralise peer pressure, Discourage imitation

- ***Remove Excuses:***

Set rules, Post instructions, Alert conscience, Assist compliance, Control drugs and alcohol



Community Safety Project Examples

Redditch - 2023/24

Nominated Neighbour Scheme



The Nominated Neighbour scheme, which aims to protect vulnerable residents from doorstep crime and rogue trader offences, continues to be a successful local initiative.

137 vulnerable Redditch residents are now signed up to the scheme, which is further promoted with partner agencies including Trading Standards and Age UK. Also, several presentations and promotional events have been delivered this year and during these events there were 125 positive engagements with residents who directly received advice about keeping safe from scams, rogue traders and other doorstep crime offences. Redditch venues included Ecumenical Centre Older Person's Forum, Millward Place Older Person's Complex, Archer Road / Other Road Community Meeting and Redditch Green Fair at Arrow Valley Lake

The Community Safety team also monitors and circulates information on current national, regional and local scams that may target residents.

Find more information about this scheme here: [Give cold callers the cold shoulder](#)





Planning Consultations



The Community Safety team has two College of Policing qualified, Designing Out Crime Officers (DOCO) who can review planning applications, making appropriate crime prevention and security recommendations with the aim of making future building developments less vulnerable to crime and disorder

In 2022-23 officers examined 34 applications totalling 1052 residential units, 10 Commercial Units and 1961 Sqm. of commercial development.

22 of these applications related to Redditch developments. For example, DOCO advice was provided regarding the Council's own re-development of the Redditch Town Hall and advice was also provided for youth organisation Your Ideas' development of their youth centre in Bengrove Close following a successful bid to the national Youth Endowment Fund.

As part of wider development of this area of work the team organised a Designing Out Crime Conference on 8th February 2023 for Planners, Elected Members, Partner Agencies and the Police.



Crime Risk Surveys



Home Security Assessments

The Community Safety team has carried out 32 Home Security Assessments at the properties of residents vulnerable to crime with many households receiving upgrades and improvements to the physical security of their properties.

Some security assessments were made following discussions about the safety of domestic abuse victims held at MARAC meetings. Other assessments were carried out at the request of community safety partners such as the police and council services such as the Neighbourhood & Tenancy team.

Domestic Abuse support including Sanctuary and MARAC (Multi-Agency Risk Assessment Conference)

The Community Safety team attends the local MARAC meeting which is a nationally recognised process for managing high risk domestic abuse cases. Vulnerable residents who are assessed as being at high risk of serious harm from an intimate partner or family member are referred into MARAC for the purpose of coordinating safeguarding activities across all organisations that can offer support and assistance.

Between September 2022 and September 2023 Community Safety officers completed 19 Sanctuary assessments at the properties of our most high-risk victims. The security upgrades provided have allowed the tenants to remain safely in their homes.



Redditch Town Centre

Environmental Visual Audit

A sub-group of Safer Redditch has been set up to look specifically at issues in the within Redditch Town Centre. This multi-agency group has made recommendations for changes to the local environment that will help to reduce incidents of ASB within the town centre.

Recommendations have included changes to lighting, maintenance of tree and shrubs, review of different access points into the centre and work to provide more security to the area around the bandstand.



Redditch Town Centre PSPO



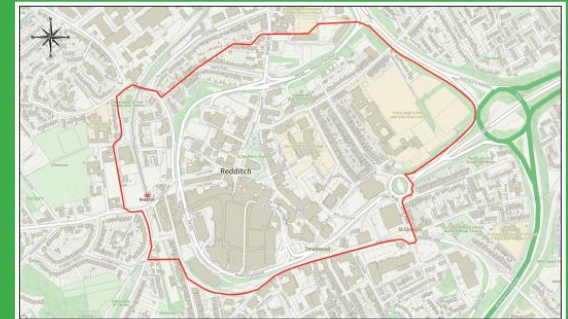
Another of the recommendations from the Town Centre sub-group is implementation of a Public Space Protection Order (PSPO) for Redditch Town Centre.

The aim of the PSPO is to stop problems like:

- Alcohol related ASB in open spaces
- Possession and use of Psychoactive Substances e.g., Nitrous Oxide
- Public urination, defecation and other offensive, indecent or threatening behaviour
- Abusive, obscene and threatening language

The PSPO will allow officers to ask people to stop drinking alcohol in the restricted area and ask them to surrender their drink and all containers. Anyone using intoxicating psychoactive substances could have their items confiscated and anyone behaving in a threatening, abusive or offensive manner could be asked to leave the area for a set period. A breach of a PSPO is a criminal offence and if a person refuses to comply with a request, they can be issued a fixed penalty notice of up to £100 or they could be arrested. On conviction, the fine for breach of a PSPO is up to maximum of £1000.

Redditch Borough Council wants your views on a proposed **Public Space Protection Order (PSPO)** that would restrict alcohol related anti-social behaviour, stop misuse of intoxicating substances and prevent abusive and offensive behaviour in an area of the town centre marked in red on the map below.



View the proposals in full and have your say at www.redditchbc.gov.uk/TownCentrePSPO

Paper questionnaires are available at Redditch Town Hall and Redditch Library.

Closing date for comments: Midnight on Sunday 29th October, 2023.



If you need this information in another language or format, please contact us to discuss how we can best meet your needs, on equalities@bromsgroveandredditch.gov.uk or 01527 548284.



Environmental Visual Audit

Archer Road / Other Road

Following concerns raised by residents, the Community Safety Team carried out an initial Environmental Visual Audit of the area accompanied by the Ward Member, officers from West Mercia Police and RBC Planning dept. EVA is a process that looks for any environmental opportunities to reduce criminal activity.

As a result of this joint audit, RBC Environmental Service Team carried out landscaping work in the area to cut back overgrown hedges. Residents and the nearby High School also assisted with a general tidy up. Other improvements in the area included the setup of a resident's group, improvements to lighting and increased police patrols.





Operation Sceptre – Knife Crime Awareness Campaign 15th to 21st May 2023

'Op Sceptre' is a week-long national campaign aimed at tackling knife crime.

During the week members of the public were encouraged to hand-in unwanted knives to prevent them from getting into the wrong hands and being used in crime.

Knife Surrender bins were placed at key locations and the Community Safety Team supported Safer Neighbourhood Officers at key community events to raise awareness of the topic and encourage people to take the opportunity to surrender any knives causing concern.





NWCSP Funded Knife Arch



Date	Purpose
13/10/2022	Joint operation with SNT, BTP and West Midlands Safer Travel Team at Redditch Train Station to prevent people from using knives and to counteract cross border County Line drug activity.
16/12/2022	Operation Presence - Knife Crime Operation. A local seasonal operation including Kingfisher Centre and areas of concern in Woodrow.
20/01/2023	Night-Time Economy deterrent activity outside Licensed Premises in the Town Centre
03/03/2023	Ongoing operation regarding knife crime prevention at various locations within the Town Centre
12/05/2023	Supporting national Operation Sceptre Knife Crime Awareness and Surrender campaign
06/07/2023	Joint operation with SNT, BTP and West Midlands Safer Travel Team at Redditch Train Station
26/07/2023	Joint operation with SNT, BTP and West Midlands Safer Travel Team at Redditch Train Station
11/10/2023	West Mercia Police County Lines Intensification Week at Redditch Train Station

MAKING COMMUNITIES SAFER

#ASBawarenessweek



North Worcestershire
Community Safety Partnership

3rd to 9th July 2023



For this national week of focus on ASB, the Community Safety Team organised a programme of events incorporating a media campaign and community events that ran throughout the week. Community Safety Officers joined partners including the Police and Housing Providers to provide advice on measures to address ASB and discuss with residents their experiences and concerns about ASB locally.

Both an internal and external communications took place with articles on the Orb, in the local press and messages were shared daily via social media. These matched the daily themes suggested by the national organisers www.resolveuk.org.uk

Hate Crime Awareness Week 2023

This year's Hate Crime Awareness Conference took place on Thursday 19th October and was delivered in partnership with Victim Support and West Mercia Police with a focus on Disability. North Worcs. Hate Incident Partnership (NWHIP) was fortunate to have Lorraine Kelly open and close the event and Sir Lee Pearson shared his experiences of being a victim of hate crime via a pre-recorded video.

Throughout the day, multiple sessions were held with attendance from local schools and community groups that support residents who have a disability. The About Face Theatre group delivered a performance which engaged the audience, asking key questions about what they were seeing and what could have been done differently to prevent the incident of hate crime being enacted on stage.

NWHIP members also generated and shared relevant Hate Crime Awareness Week content via social media.



Annual White Ribbon Domestic Abuse Campaign 25th Nov to 10th Dec



The 2023 campaign is currently being planned and will again feature various community events and social media promotion, with the 16 Days of Action again being supported by our partners and the local press.

Last year, officers were able to move back to face-to-face delivery with the Community Safety team and partners hosting a publicity stand in Kingfisher Centre to support the campaign and promote the work of support services.

Alongside in-person promotion, the team also had a strong social media campaign, engaging with local sports teams and the full 16 Days of Action were supported by our partners and the local press.





Safe Places Scheme

The Safe Places Scheme gives the elderly, people with a disability, illness or learning difficulty, or anyone who feels in danger; a range of safe places where they can go to for help if they feel they are being bullied, abused or harassed while out and about.

All Safe Places are identified by a Safe Place sticker and the organisations employees receive training, so that they can give reassurance and help people contact appropriate support, as needed.

A full directory of the Safe Places in Redditch is available here:-
[Safe Places | Our Way Self Advocacy](#)



Directory of Safe Places		
Redditch		
Coffee #1	Kingfisher Shopping Centre B97 4HJ	
Age UK	85 Mason Road Headless Cross B97 5DQ	
Barclays Bank	Kingfisher Shopping Centre B97 4HJ	
Connect	6 Evesham Walk B97 4EX	
Emmanuel Church	The Ecumenical Centre 6 Evesham Walk B97 4HJ	
Kingfisher Reception	Kingfisher Shopping Centre Walford House B97 4HJ	
Palace Theatre	Alexander Street B98 8AE	

Redditch Borough Council	Town Hall Water Stanz Square	
Shopability	Kingfisher Shopping Centre Kingfisher Walk B97 4HJ	
St Stephen's Church	Church Green B97 4DY	
The Library	15 Market Place B98 8AR	
Where Next Hub	Unit 24 Miliborough House Isley Street B98 7AL	
Where Next Nurseries	Wellbourne Close Eastmore Road B98 8ER	
Wilkinson	Kingfisher Shopping Centre B97 4HJ	
Batchley Support Group	21/21a Batters Lane Batchley B97 6JY	

Head of Wellbeing	9 George Walk B97 4HB	
Youth 5 Community Enterprise	The RECI Centre, South Street, B98 7DQ	
Nesta's Cafe	Kingfisher Shopping Centre B97 4HJ	
Bono Tea Room	Kingfisher Shopping Centre B97 4HJ	
British Heart Foundation	3 Market Place B98 8AA	
The Wetherspoons Pub	Uxton Hill, B97 4QR	



North Worcestershire
Community Safety Partnership

ANY QUESTIONS?

THANK YOU FOR LISTENING

Bev Houghton

Community Safety Manager

Tel: 01527 534187

Email: bev.houghton@bromsgroveandredditch.gov.uk